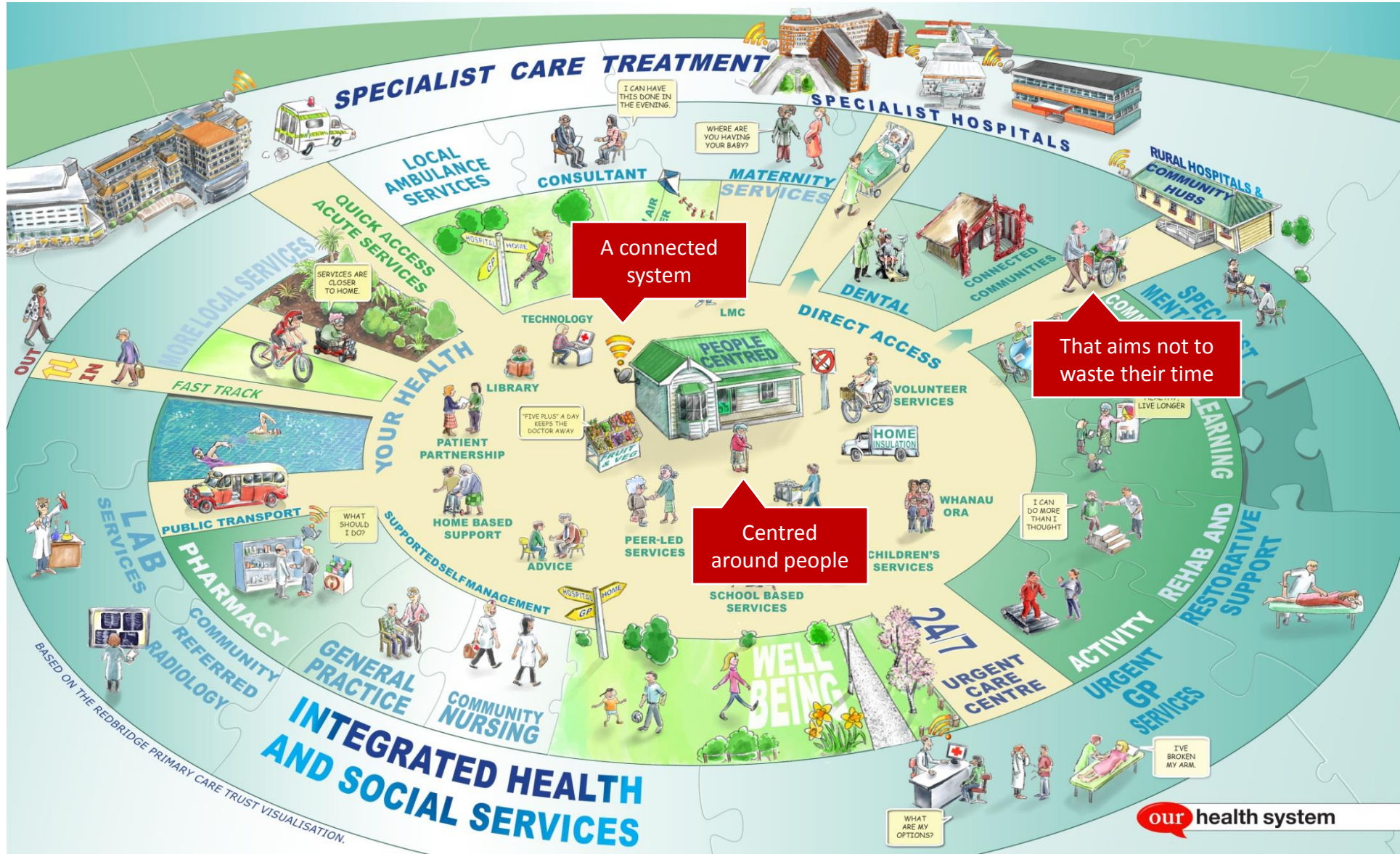


# our Vision



# Three Strategic Goals



**People take greater responsibility for their own health.**

- The development of services that support people/whānau to stay well and take increased responsibility for their own health and wellbeing.

**People stay well in their own homes and communities.**

- The development of primary care and community services to support people/whānau in a community-based setting and provide a point of ongoing continuity, which for most people will be general practice.

PRIMUS



**People receive timely and appropriate complex care.**

- The freeing-up of hospital-based specialist resources to be responsive to episodic events and the provision of complex care and support and specialist advice to primary care.

SECUNDUS



# Canterbury DHB is Committed to Supporting Health Service Delivery in Akaroa

- The Board supports the vision of community owned facility
- The Board is committed to a partnership between Canterbury DHB and the Akaroa community
- However Canterbury DHB will remain involved and connected through a
  - Lease agreement which ensures sustainability for the community
  - Service agreement to ensure services are maintained at a high standard

# Service Transition Plan

Goal: the proposed community owned operating company will be able to take over a “going concern” with the right systems and processes in place



# Service Transition Plan

- Co-management of Canterbury DHB and Pompallier House services
- With the Akaroa Health Centre, develop a plan for the fully integrated service
- Merging of the three services into a new way of working that continues to support the community in a sustainable way .

**Our Health System  
is based on trusted  
relationships.**

